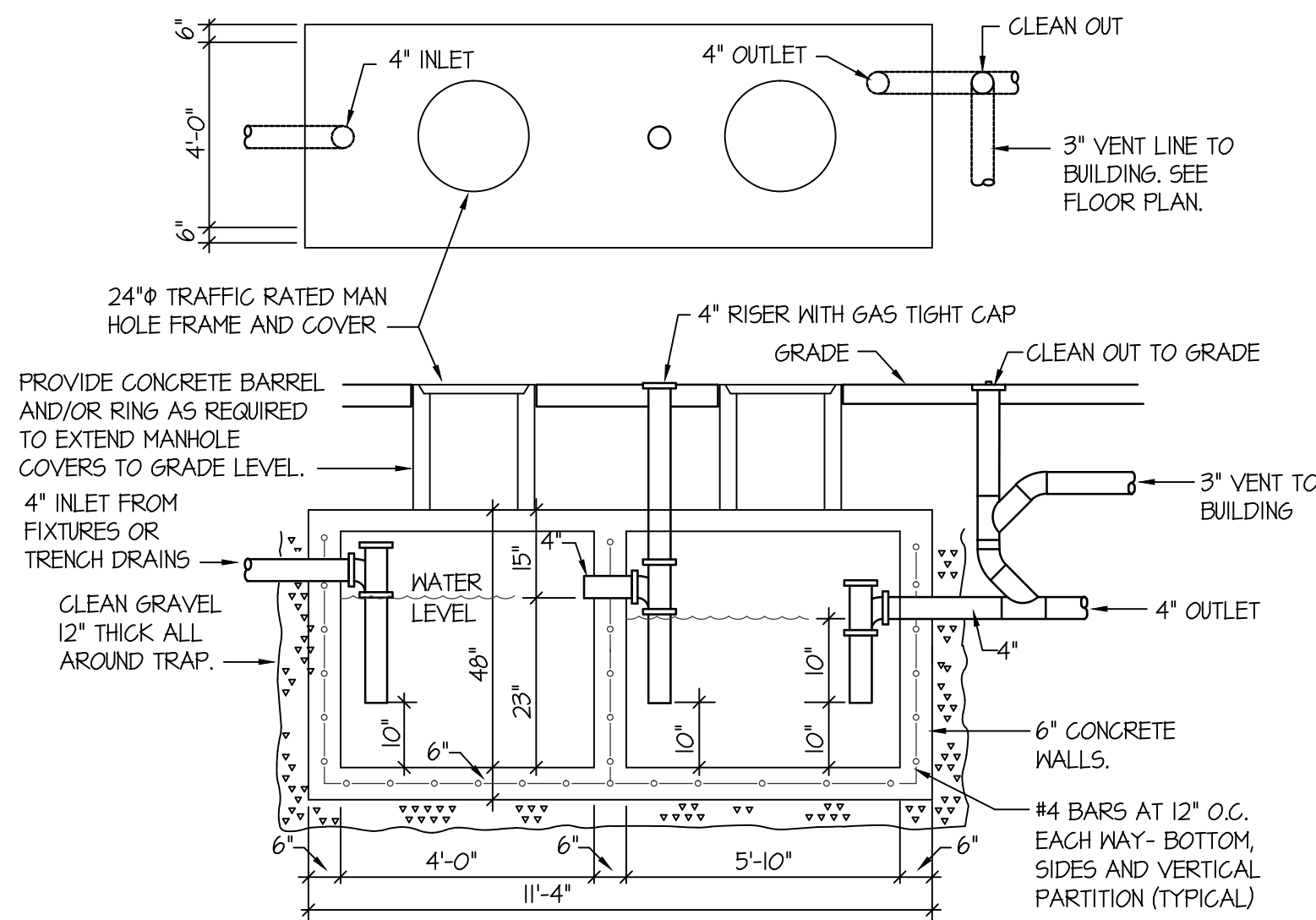
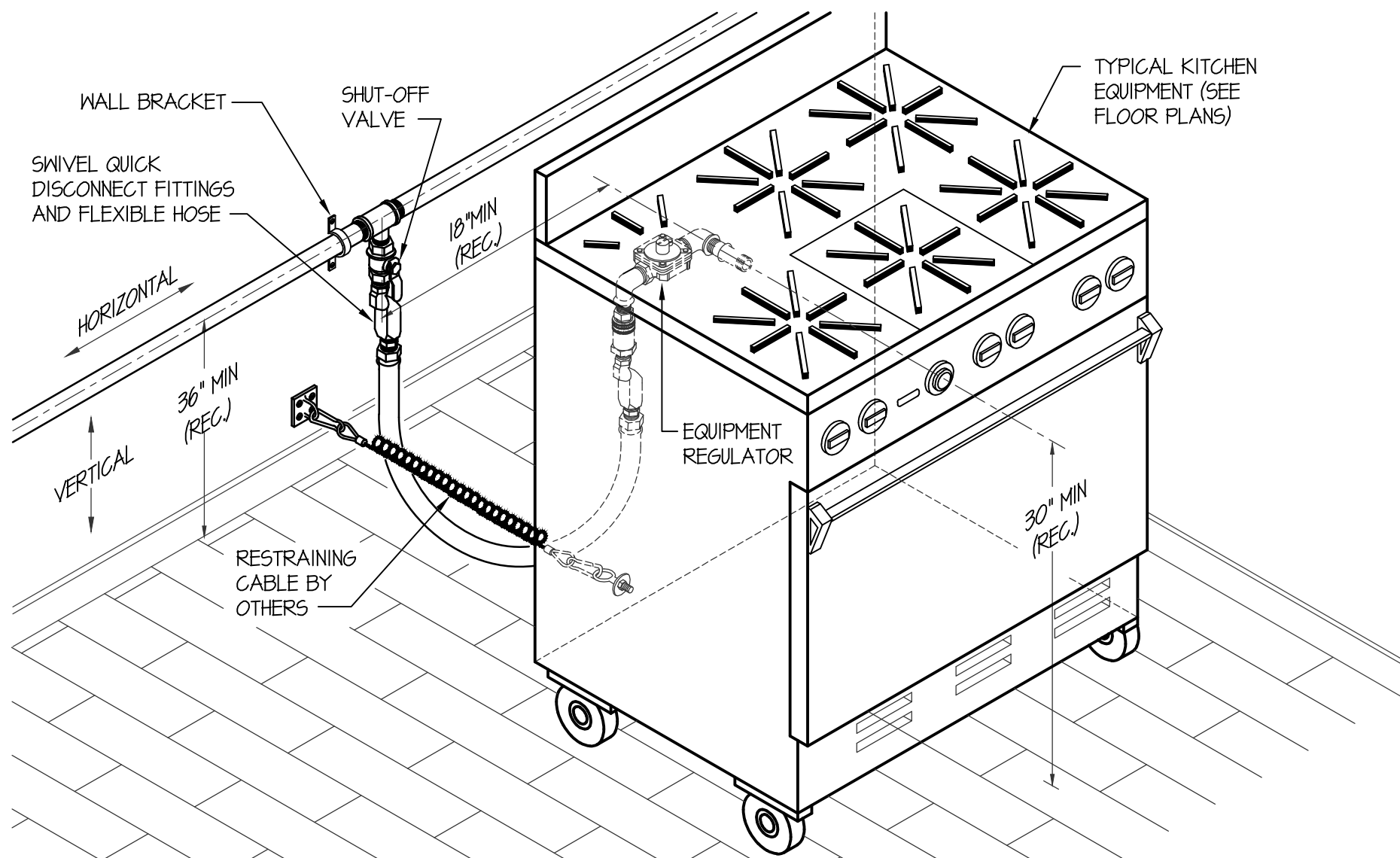


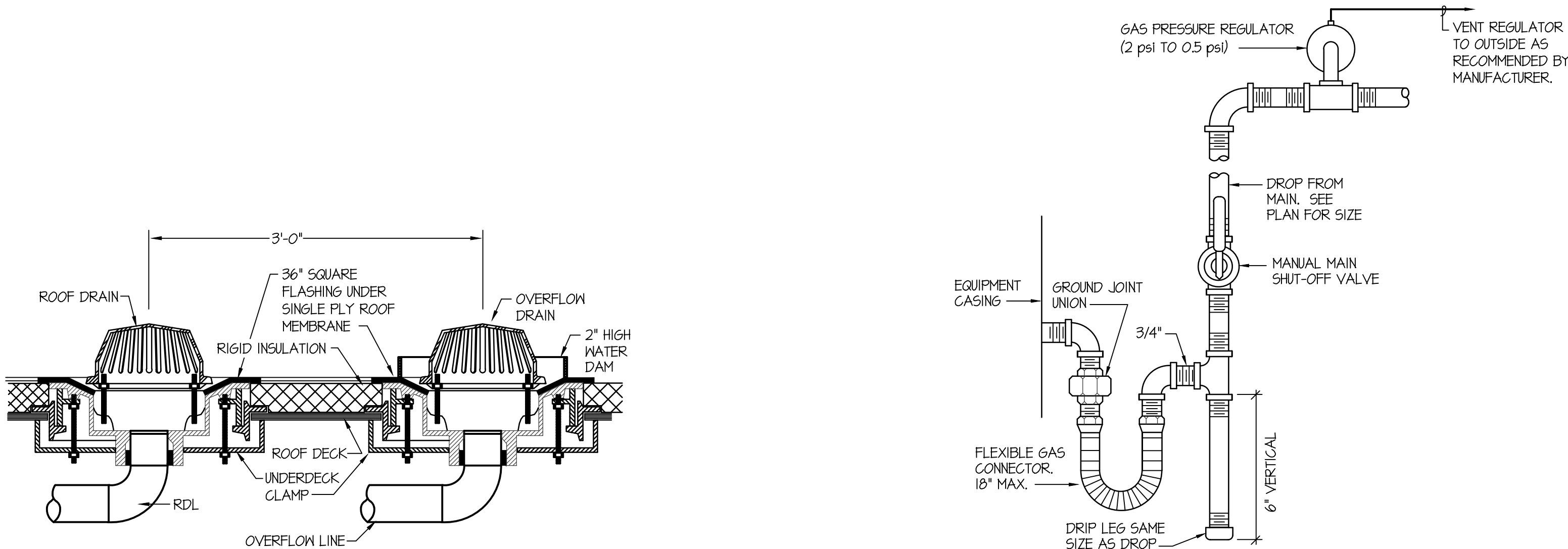
GAS FIRED WATER HEATER PIPING DIAGRAM
NO SCALE



GREASE INTERCEPTOR DETAIL
NO SCALE



SWIVEL GAS HOSE CONNECTOR DETAIL
NO SCALE



ROOF DRAIN DETAIL
NO SCALE

GAS LINE CONNECTION DETAIL
NO SCALE

FIXTURE SCHEDULE					
SYM.	DESCRIPTION	HOT	COLD	WASTE	VENT
(DF-1)	BH-LEVEL DRINKING FOUNTAIN - ELKAY MODEL EZ-STL8WBLK WITH EZH2O BOTTLE FILLER FLEXI-GUARD BUBBLERS, 1/2" STOP AND 1-1/2" P-TRAP. PROVIDE ALL INTERCONNECTING PIPING AND DRAIN.	---	1/2"	1-1/2"	1-1/2"
(DF-2)	S.S. ADA BH-LEVEL DRINKING FOUNTAIN - ELKAY MODEL EHX212C BH-LEVEL STAINLESS STEEL DRINKING FOUNTAIN WITH SIDE CONTROLS AND S.S. WALL MOUNTING PLATE. MOUNT AT ADA HEIGHT.	1/2"	1/2"	2"	2"
(DS-1)	ROOF DRAIN DOWN SQUIT - JAY R SMITH MODEL 1T70 SIZE 4" WITH ROUGH BRONZE FINISH AND 4" DRAIN LINE CONNECTION.	---	---	4"	---
(DS-2)	ROOF DRAIN DOWN SQUIT - JAY R SMITH MODEL 1T70 SIZE 6" WITH ROUGH BRONZE FINISH AND 6" DRAIN LINE CONNECTION.	---	---	6"	---
(DW-1)	COMMERCIAL DISHWASHER - CMA DISHMACHINES MODEL EST, PROVIDED BY OWNER. PLUMBER TO INSTALL 3/4" (140°F) HOT WATER LINE AND 2" DRAIN LINE TO FLOOR SINK WITH AIRGAP.	3/4"	140°F	2"	---
(FD-1)	2" FLOOR DRAIN WITH PRIMER - ZURN Z-415B WITH 5" NICKEL-BRONZE STRAINER AND 2" DEEP SEAL P-TRAP WITH ZURN 1022 TRAP PRIMER.	---	---	2"	2"
(FR-1)	GAS DEEP FRYER - COOKRITE ATF5-T5 FRYER, TO BE FURNISHED BY OWNER. PLUMBER TO PROVIDE 3/4" GAS LINE COMPLETE WITH SHUT-OFF VALVE AND FLEXIBLE CONNECTION TO UNIT. (170,000 BTU LOAD) (SEE DETAIL ON THIS SHEET)	---	---	---	---
(FS-1)	FLOOR SINK - ZURN Z-1900-KC WITH WHITE ENAMEL FINISH, DOME STRAINER AND 4" DEEP SEAL P-TRAP. PROVIDE HALF GRATE OVER SINK.	---	---	4"	2"
(FS-2)	FLOOR SINK - ZURN Z-1900-KC WITH WHITE ENAMEL FINISH, DOME STRAINER AND 2" DEEP SEAL P-TRAP. PROVIDE 3/4 GRATE OVER SINK.	---	---	2"	2"
(GR-1)	GAS GRIDDLE - COOKRITE MODEL ATM6-36 GAS GRIDDLE, TO BE FURNISHED BY OWNER. PLUMBER TO PROVIDE 3/4" GAS LINE COMPLETE WITH SHUT-OFF VALVE AND FLEXIBLE CONNECTION TO UNIT (120,000 BTU LOAD). (SEE DETAIL ON THIS SHEET)	---	---	---	---
(HS-1)	HAND SINK - BK MODEL BKHS-W-1410, TO BE FURNISHED BY OWNER WITH FAUCET & STRAINER. PLUMBER TO PROVIDE 1/2" BALL STOPS AND S.S. BRAIDED SUPPLIES & 1-1/2" P-TRAP.	1/2"	1/2"	1-1/2"	1-1/2"
(IM-1)	ICE MAKER - TO BE FURNISHED BY OWNER. PLUMBER TO PROVIDE 1/2" CW WATER LINE TO MACHINE WITH SHUT-OFF VALVE AND 3/8" ADAPTER. RUN 3/4" DRAIN TO NEAREST FLOOR SINK WITH AIR GAP.	---	1/2"	---	---
(JS-1)	FLOOR MOUNTED SERVICE SINK - KOHLER K-6710 "WHITBY" W/ K-8440 WIRE RIM GUARD, K-8428 FAUCET ASSEMBLY AND K-4142 STRAINER WITH DEEP SEAL P-TRAP.	1/2"	1/2"	2"	2"
(KS-1)	TRIPE COMPARTMENT S.S. SINK - TO BE FURNISHED BY OWNER WITH PRE-RINSE SPRAY FAUCET AND (3) STRAINERS. PLUMBER TO PROVIDE 1/2" BALL STOPS AND S.S. BRAIDED SUPPLIES & 2" WASTE FROM EACH COMP. COMBINED TO FLOOR SINK WITH 1" AIR GAP.	1/2"	1/2"	2"	---
(L-1)	ADA COUNTERTOP LAVATORY - KOHLER MODEL K-2405-4 SELF-RIMMING "FARMINGTON" WITH MOEN L4601 LEVER FAUCET, K-TT15 OPEN GRID STRAINER, 1/2" BALL STOPS AND 1-1/4" P-TRAP. INSULATE HOT WATER SUPPLY AND TRAP WITH JACKET.	1/2"	1/2"	1-1/2"	1-1/2"
(L-2)	COUNTERTOP LAVATORY - KOHLER MODEL K-2405-4 SELF-RIMMING "FARMINGTON" WITH MOEN L4601 LEVER FAUCET, K-TT15 OPEN GRID STRAINER, 1/2" BALL STOPS AND 1-1/4" P-TRAP.	1/2"	1/2"	1-1/2"	1-1/2"
(L-3)	ADA WALL MOUNTED LAVATORY - KOHLER 2023 "GREENWICH" (SIZE 20"x18") WITH K-TT15 OPEN GRID STRAINER, MOEN L4601 FAUCET, 1/2" STOPS AND 1-1/2" P-TRAP. PROVIDE INSULATING JACKET ON WATER AND WASTE PIPE. PROVIDE CONCEALED ARM CARRIER SYSTEM.	1/2"	1/2"	1-1/2"	1-1/2"
(O-1)	GAS CONVECTION OVEN - AMERICAN RANGE MODEL MA-2 DOUBLE CONVECTION OVEN TO BE FURNISHED BY OWNER. PLUMBER TO PROVIDE (2) 3/4" GAS LINES COMPLETE WITH SHUT-OFF VALVES AND FLEXIBLE CONNECTIONS TO UNIT. (SEE DETAIL ON THIS SHEET) 160,000 BTU	---	---	---	---
(OD-1)	ROOF OVERFLOW DRAIN - JAY R SMITH MODEL 1080 SIZE 4" WITH 2" HIGH WATER DAM, UNDERDECK CLAMP AND 36" SQUARE FLASHING.	---	---	4"	---
(OD-2)	ROOF OVERFLOW DRAIN - JAY R SMITH MODEL 1080 SIZE 6" WITH 2" HIGH WATER DAM, UNDERDECK CLAMP AND 36" SQUARE FLASHING.	---	---	6"	---

FIXTURE SCHEDULE					
SYM.	DESCRIPTION	HOT	COLD	WASTE	VENT
(RD-1)	ROOF DRAIN - JAY R SMITH MODEL 1010 SIZE 4" WITH UNDERDECK CLAMP AND 36" SQUARE FLASHING.	---	---	4"	---
(RD-2)	ROOF DRAIN - JAY R SMITH MODEL 1010 SIZE 6" WITH UNDERDECK CLAMP AND 36" SQUARE FLASHING.	---	---	6"	---
(R-1)	GAS RANGE - COOKRITE MODEL ATO-10B GAS RANGE TO BE FURNISHED BY OWNER. PLUMBER TO PROVIDE 3/4" GAS LINE COMPLETE WITH SHUT-OFF VALVE AND FLEXIBLE CONNECTIONS TO UNIT. (304,000 BTU LOAD) (SEE DETAIL ON THIS SHEET)	---	---	---	---
(RP-1)	CIRCULATING PUMP - GRUNDFOS MODEL UP15-10B1 BRONZE PUMP WITH 3/4" FLANGES (2 GPM @ 5' OF HEAD) 120/60/1	3/4"	---	---	---
(S-1)	SINGLE COMP. SINK WITH FAUCET - ELKAY MODEL LR-1410 WITH 10.6A TYPE 304 STAINLESS STEEL CONSTRUCTION, 3-HOLE FAUCET DRILLINGS, LK-4100 LEVER HANDLE FAUCET, LK-41 STRAINERS, 1-1/2" P-TRAP AND 1/2" BALL TYPE STOP VALVES.	1/2"	1/2"	1-1/2"	1-1/2"
(S-2)	SOILED DISH SINK WITH PRE-RINSE FAUCET - BK MODEL BKSD-48-L-SS WITH BK-F-SMFR-WB-6 PRE-RINSE SPRAYER FAUCET, TO BE SUPPLIED BY OWNER. PLUMBER TO ROUGH-IN AND INSTALL 1/2" HW & CW LINES WITH BALL TYPE SHUT-OFF VALVES. RUN 2" WASTE TO FLOOR SINK WITH AIRGAP.	1/2"	1/2"	1-1/2"	1-1/2"
(U-1)	ADA WALL MOUNTED URINAL - KOHLER K-4484-T "FRESHMAN" WITH WALL CARRIER & SLOAN REGAL FLUSH VALVE. MOUNT AT ADA LEVEL.	---	3/4"	2"	2"
(U-2)	WALL MOUNTED URINAL - KOHLER K-4484-T "FRESHMAN" W/ WALL CARRIER & SLOAN REGAL FLUSH VALVE.	---	3/4"	2"	2"
(WC-1)	ADA TANK TYPE WATER CLOSET - KOHLER K-3421 "HIGHLINE" W/ ELONGATED BOWL, K-4670-C WHITE OPEN FRONT SEAT, BOLT CAPS AND 1/2" STOP VALVE.	---	1/2"	4"	2"
(WC-2)	TANK TYPE WATER CLOSET - KOHLER K-3422 "WELLWORTH" W/ ELONGATED BOWL, K-4670-C WHITE OPEN FRONT SEAT, BOLT CAPS AND 1/2" STOP VALVE.	---	1/2"	4"	2"
(WC-3)	CHILDREN'S HEIGHT WATER CLOSET - GERBER HE-20-601 "PEENEE" W/ ROUND BOWL, GERBER WHITE OPEN FRONT SEAT, BOLT CAPS AND 1/2" STOP VALVE.	---	1/2"	4"	2"
(WH-1)	ELECTRIC WATER HEATER - A.O. SMITH MODEL ECRT-50 50 GALLON ELECTRIC WATER HEATER WITH 4500 WATT UPPER & LOWER ELEMENTS (240/60/1). AMTROL 51-5 EXPANSION TANK, T&P VALVE. PROVIDE POWERS 3/4" LM-441-HO MIXING VALVE.	3/4"	3/4"	---	---
(WH-2)	ELEC. WATER HEATER (1 GALLON) - EEMAX MODEL EMT-1 120 VOLT 1500 WATT ELEC WATER HEATER WITH T&P VALVE PIPED THRU CABINET. MOUNT HEATER UNDER LAVATORY.	1/2"	1/2"	---	---
(WH-3)	GAS WATER HEATER - A.O. SMITH MODEL 6PVX-50L HEATER WITH 120 VOLT POWER CORD, AMTROL 51-5 EXPANSION TANK, T&P VALVE. 50,000 BTU INPUT, SEE PLAN FOR 140°F WATER TO DISHWASHER	3/4"	3/4"	---	---
(WH-4)	ELECTRIC WATER HEATER FOR PAVILLION - A.O. SMITH MODEL EJG5-20 ELECTRIC WATER HEATER WITH 2500 WATT UPPER & LOWER ELEMENTS. (240V. NON-SIMULTANEOUS) AMTROL 51-5 EXPANSION TANK, T&P VALVE AND SYMMONS 5-200 (3/4") MIXING VALVE. (LOCATED IN PAVILLION ONLY)	3/4"	3/4"	---	---